

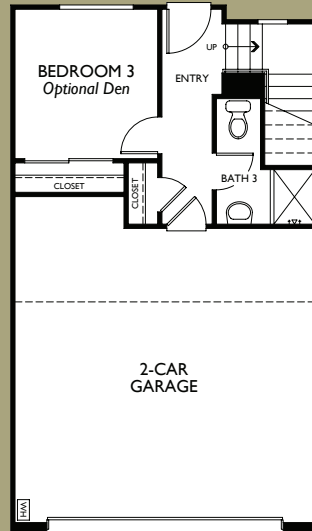


# 1

3 Bedroom  
3.5 Baths  
2 Car Garage  
Optional Den  
1,555 sq. ft

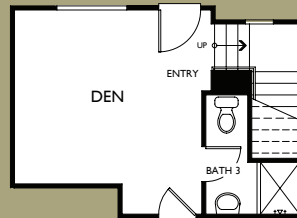


## FIRST FLOOR



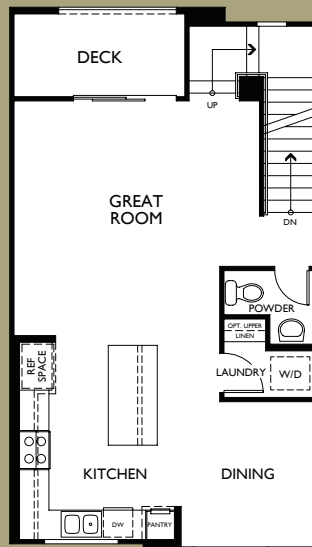
## OPTION

*Optional Den at Bedroom 3*

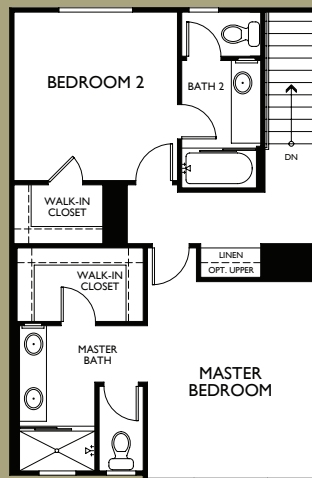




## SECOND FLOOR



## THIRD FLOOR



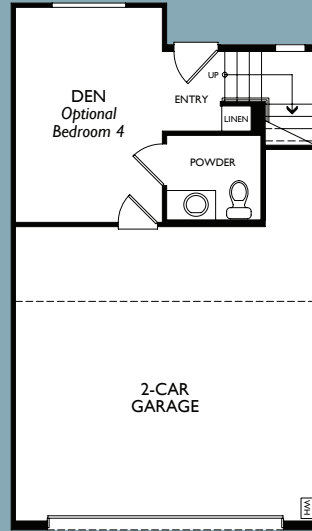


# 2

3 Bedroom + Den  
2.5 Baths + Powder Bath  
2 Car Garage  
Optional 4th Bedroom  
1,588 sq. ft.

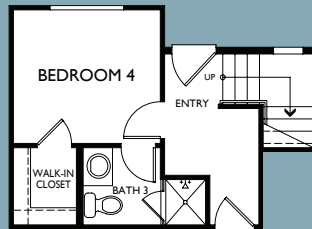


## FIRST FLOOR



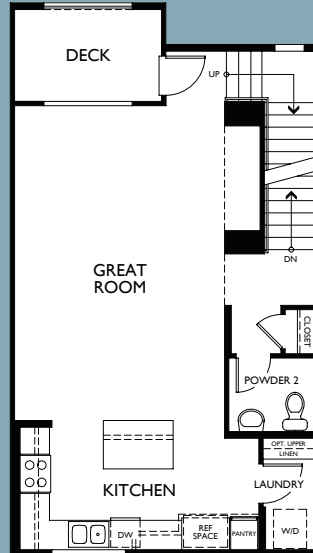
## OPTION

*Optional Bedroom 4 at Den*

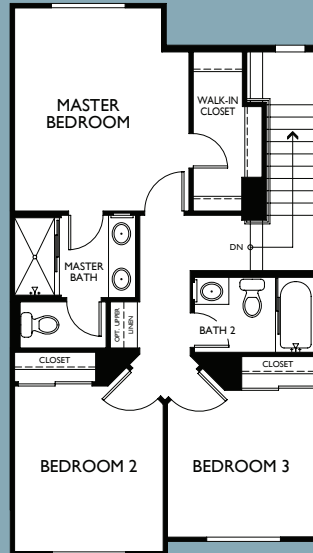




## SECOND FLOOR



## THIRD FLOOR

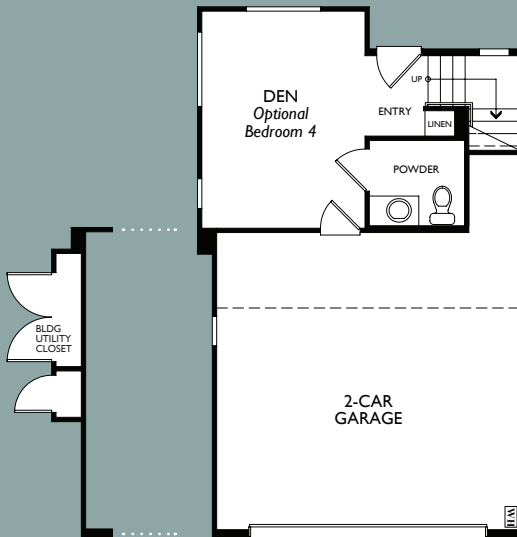


# 2 B&C

3 Bedroom + Den  
2.5 Baths + Powder Bath  
2 Car Garage  
Optional 4th Bedroom  
1,628 sq. ft.

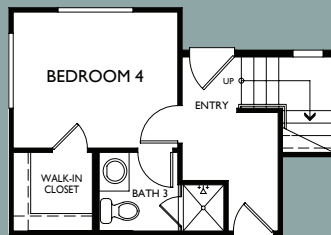


## FIRST FLOOR



2B with Building Utility Closet

2C without Building Utility Closet

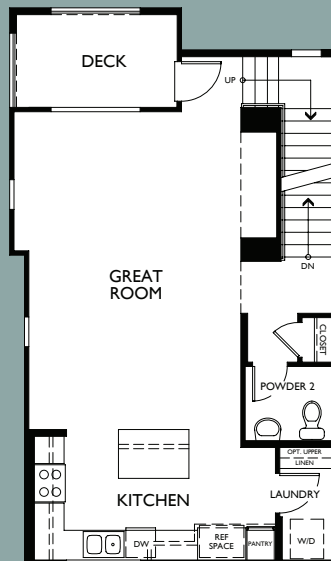


## OPTION

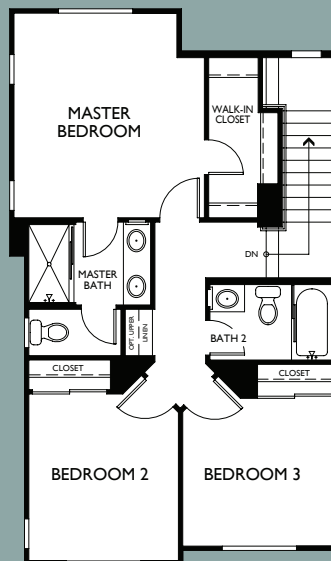
Optional Bedroom 4 at Den



## SECOND FLOOR



## THIRD FLOOR



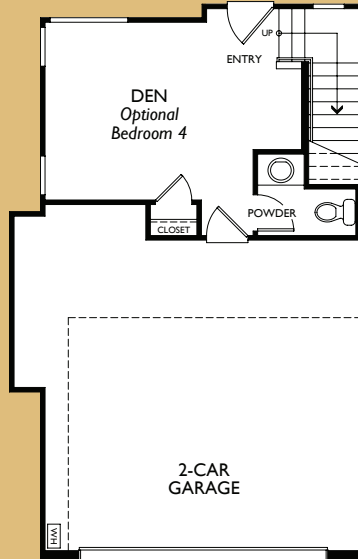


# 3

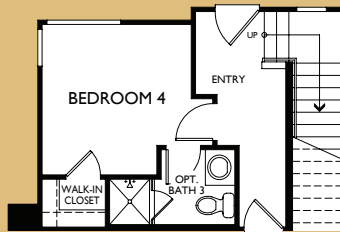
3 Bedroom + Den  
2.5 Baths + Powder Bath  
2 Car Garage  
Optional 4th Bedroom  
1,682 sq. ft.



## FIRST FLOOR

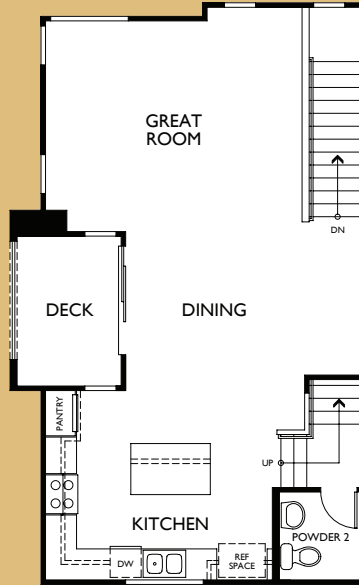


## OPTION *Optional Bedroom 4 at Den*

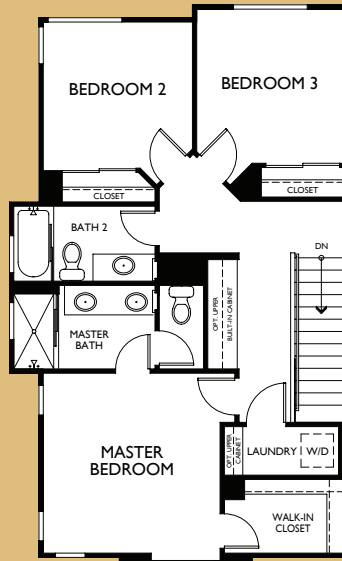




## SECOND FLOOR



## THIRD FLOOR





## Features & Amenities



## NEIGHBORHOOD

Close to Transportation

- 91 Fwy
- 15 Fwy
- Corona North

Metrolink Station

Nearby Shopping

Neighborhood-close parks

- Butterfield Park
- River Road Park

Near Cresta Verde Golf Course

## COMMUNITY

Gated Community

Pool/Spa

Community BBQ areas

Park/Tot Lot

3 - 4 bedroom

2.5 - 3.5 baths

Homes ranging from

1,555 - 1,682 sq. ft.

## ENTRY

First level Bedroom or Den

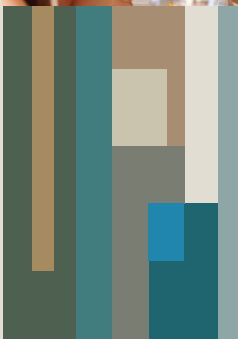
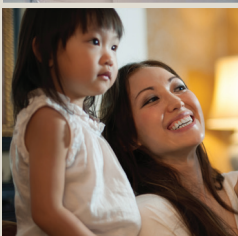
Contemporary door  
hardware with optional  
SmartKey Technology

## MASTER SUITE

Generous Master suite with walk-in closet

Quartz countertop with  
dual vanities and sinks

Jbox for future ceiling fan



## KITCHEN

Granite countertops with full height back splash behind the range and 6" back splash on counter space areas

Countertop dining islands

Shaker style white thermafoil cabinetry with adjustable shelves

GE Stainless Appliances

- Self-cleaning oven
- and gas range
- Microwave
- Dishwasher

Undermount stainless double bowl sink with contemporary Moen "pull down" faucet

## BATH

Secondary baths with a Quartz countertop, undermount sink and Moen faucet

Powder baths with pedestal sink and Moen faucet

## HOME HIGHLIGHTS

Modern designed great room with both eat-in and island kitchens


Private Decks

Direct Access 2 car garages with automatic door opener

9 ft. ceilings throughout

Interior Laundry room with built in cabinetry





Just north of Corona's iconic City Circle, Boardwalk Townhomes' gated neighborhood captures the charm and warmth of nearby historic homes to create modern, three-level townhome residences.

Ideally located with easy access to shopping, entertainment centers and freeway entrances is nestled against the mountains.

Open your front door to lushly landscaped common areas to mingle with neighbors. Enjoy the resort-styled amenities that invite you to relax.

Whether you choose to take advantage of the amenities as a private retreat from the hustle and bustle of the day – or a place for friends and family to gather – Boardwalk invites you to “come home.”

**BOARDWALK**  
TOWNHOMES